

employment



Traditional claimant count rates were replaced in January 2003 with claimant count proportions.

The traditional claimant count rates expressed the number of people claiming Job Seekers Allowance as a percentage of a corresponding mid year estimate of the number of jobs in the area plus the number of claimants.

The new proportions express the number of claimants as a percentage of the estimated number of working age residents in the area and are therefore just resident based. Working age is defined as those aged 16-59 for women and 16-64 for men.

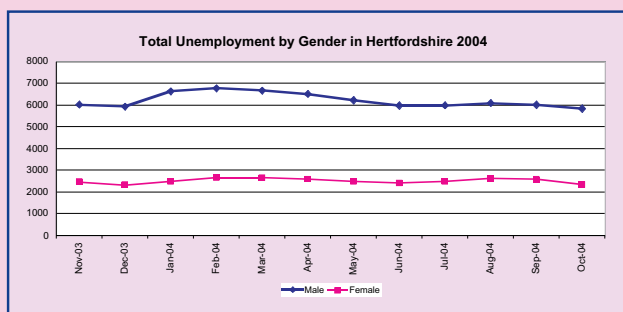
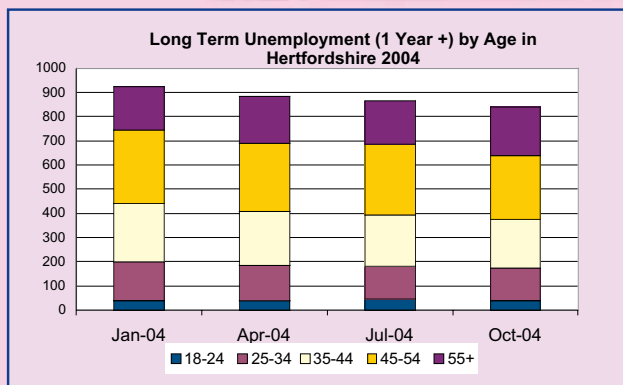
The claimant count proportion for Hertfordshire was 1.4% in August 2004, no change since September 2002. The figure comprised a total of 8,717 people claiming - 6,086 males (70%) and 2,631 females (30%).

The rate has fluctuated marginally over the last year to a low of 1.3% in several months and to a high of 1.5% in February/March, which is probably accountable to seasonal shifts (changes in employment levels due to school/university holidays, festive season, January sales, etc.)

The Hertfordshire Claimant Count Proportion is consistently below the Great Britain (GB) and East of England figures. GB proportion in August 2003 was 2.3% (815544) and the East of England rate was 1.6% (54,795). The trends in terms of highs and lows both nationally and regionally are similar to Hertfordshire.

Indicator UN1 - Long term unemployment (more than 1 year) by age/gender

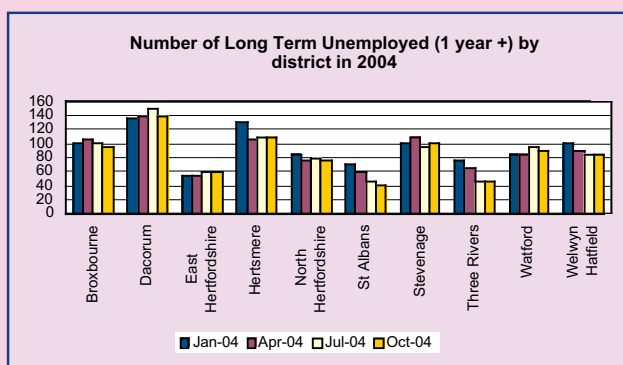
Unemployment figures for Hertfordshire are shown in two ways. Long term unemployment is shown for each age range and total monthly claimant count is split into male and female data.



Indicator UN2 - Long term unemployment (more than 1 year)

There has been a slight decrease in long term unemployed over the last nine months in Hertfordshire. The claimant count figure now stands at 840 with the highest proportion in the 45-54 age band.

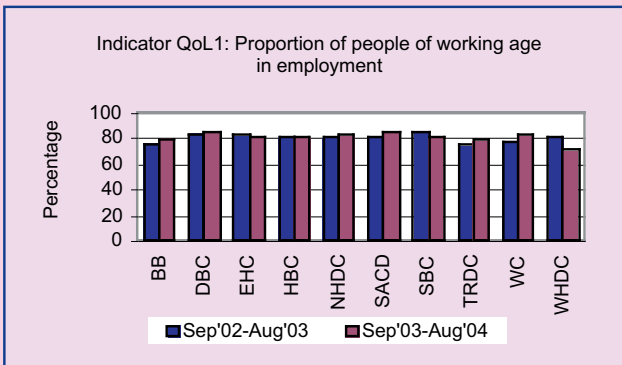
The highest figure for long-term unemployment in July 2003 is found in Dacorum.



employment



Indicator QoL1 - Proportion of people of working age in employment



Indicator QoL5 - The percentage increase or decrease in the number of local jobs

There was a very slight increase in the number of jobs in the county, rising from 489,100 in 2002, to 489,200 in 2003.

Indicator QoL3 Unfortunately we are unable to use the indicator this year due to data constraints.

Indicator QoL2 - The proportion of unemployed people claiming benefits who have been out of work for more than a year

	Total unemployed	% of all claimants who have been out of work for more than a year
Jan '04	935	10.2
Apr '04	885	9.7
Jul '04	860	10.1
Oct '04	835	10.2

