

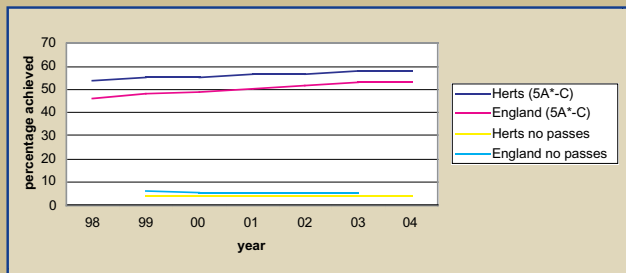
education



Education is a major contributor to quality of life, promoting active contribution to and integration with society, increasing confidence and self-esteem and ensuring an able workforce for the future benefit of the economy. Therefore we believe education and training is as important for adults as it is for children.

The Children, Schools and Families Service (CSF) was launched by Hertfordshire County Council in April 2001. By joining Education with the children's element of Social Services, the new service gives integrated and better support to Hertfordshire's children. CSF aims to help all children to achieve and is currently giving particular attention to behaviour and achievement in school.

Indicator ED1 – GCSE performance



It can be seen from the above graph that, in recent years, Hertfordshire schools have achieved higher levels of passes than the national average. Although the gap between Hertfordshire schools and schools nationally is decreasing, an extra 1 in 20 students in Hertfordshire get 5 GCSEs at grades A*-C. The national figures for 2004 are not yet out for No Passes, and they are provisional for 5A*-C. The gap between those achieving no passes in Hertfordshire and nationally is closing, but remains at about 1%, with Hertfordshire's figure being around 4%.

The achievement of pupils on entry to primary schools is above average and they continue to attain standards which are higher than those achieved nationally from Key Stage 1 to GCSE. Attainment at GCE Advanced level, however, is in line with national norms. The recruitment and retention of teachers is a national problem, and

Hertfordshire is no exception to the general trend. The creation of a specialist teacher recruitment team and an online service for applications for teaching posts has proved successful and schools in Hertfordshire have benefited from an improvement in recruitment.

Indicator ED2 – Adult education Level 2*

'Level 2' equates to a GCSE standard of education. This indicator comprises students who have achieved Level 2 at the point of leaving school as well as others who have taken further qualifications at this level after the age of sixteen. The Local Education Authority works with colleges, private providers, Connexions, the Information, Advice and Guidance Partnership and other organisations in the county to encourage all young people. This may be through formal education and informal, leisure learning or basic skills programmes.



Indicator QoL9 – Young people with Level 2 qualifications*

Part (a) – The proportion of 19 year olds with Level 2 qualifications (5 or more GCSEs at grades A*-C or NVQ equivalent)

*For 16-18 participation and Adult Basic Skills, this shows growth over 2 years (1999-2000 to 2001-02). For all other targets, the change between 2000-01 and 2001-02 is shown.



Target Area	Estimated Baseline Position	Local Target to 2004 (growth from baseline)	Growth* (actual)
Level 2 at 19	10,770	158	150
Level 3 (A-Level standard, which includes NVQ and GNVQ level 3) at 19	7,249	758	130
Level 3 Adult	268,000	38,000	12,530
Adult Basic Skills	650,000	15,173	4,920

Part (b) – Percentage of 15 year old pupils in schools maintained by the local authority achieving five or more GCSEs at grades A*-C or equivalent

58.2% of students who were 15 in August 2001 and attending schools in the local authority received five or passes at GCSE grade A*-C or equivalent.

Indicator ED3 - Funded early education and childcare**

By spring 2004 84.98% of all Hertfordshire three years olds were accessing their new entitlement to funded part time early years education.

Hertfordshire has 35,000 childcare places for 0-14 year olds (16 years for children with special needs). This is the equivalent of 17.63 places per 100 children in non disadvantaged areas and 12.63 places per 100 children in disadvantaged areas giving a childcare gap between advantaged and disadvantaged areas of 5 places per 100 children.

6 Children's Centres have achieved national designation over the last twelve months. Children's Centres provide integrated early education, childcare, parenting support and health advice for children under five and their families.

* Data for Indicators ED2 and QoL9 are same as in last year's report as no new data are available. These indicators will be reviewed later in 2005 with a view to replace them.

** Indicator ED3 has replaced Indicator QoL20 – Children care provision to the under 5s, as data for Indicator QoL20 are no longer available.

