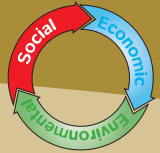




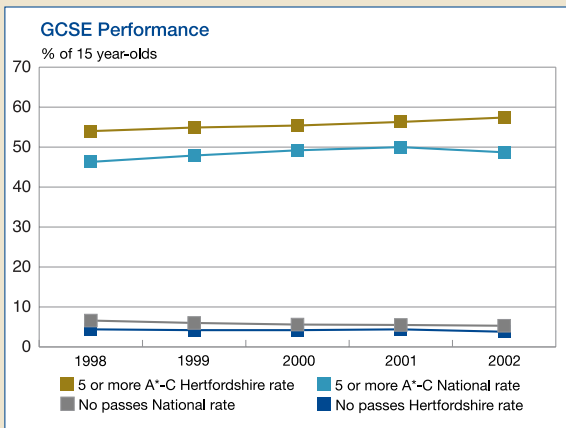
Education



Education is a major contributor to quality of life, promoting active contribution to and integration with society, increasing confidence and self-esteem and ensuring an able workforce for the future benefit of the economy. Therefore we believe education and training is as important for adults as it is for children.

The Children, Schools and Families Service (CSF) was launched by Hertfordshire County Council in April 2001. By joining Education with the children's element of Social Services, the new service gives integrated and better support to Hertfordshire's children. CSF aims to help all children to achieve and is currently giving particular attention to behaviour and achievement in school.

INDICATOR ED1 – GCSE Performance



It can be seen from the above graph that, in recent years, Hertfordshire schools have achieved higher levels of passes than the national average and the rate of improvement has kept pace with schools across the country. This has been recognised by the Office for Standards in Education (OFSTED). Hertfordshire is also one of six Local Education Authorities selected by the Department for Education Skills (DfES) to be a Diversity Pathfinder, which is an initiative for secondary school improvement.

The achievement of pupils on entry to primary schools is above average and they continue to attain standards, which are higher than those achieved nationally from Key Stage 1 to GCSE. Attainment at GCE Advanced level, however, is in line with national norms.

The recruitment and retention of teachers is a national problem, and Hertfordshire is no exception to the general trend. The creation of a specialist teacher recruitment team and an online service for applications for teaching posts has proved successful and schools in Hertfordshire have benefited from an improvement in recruitment.

INDICATOR ED2 – Adult Education Level 2

National position - 2000	75%
Hertfordshire's position - 2000	88.2%
National target - 2004	85%
Hertfordshire's target - 2004	91%

Source: Local Learning Skills Council

'Level 2' equates to a GCSE standard of education. This indicator comprises students who have achieved Level 2 at the point of leaving school as well as others who have taken further qualifications at this level after the age of sixteen. The Local Education Authority works with colleges, private providers, Connexions, the Information, Advice and Guidance Partnership and other organisations in the county to encourage all young people. This may be through formal education and informal, leisure learning or basic skills programmes.